



**wutkowski**®

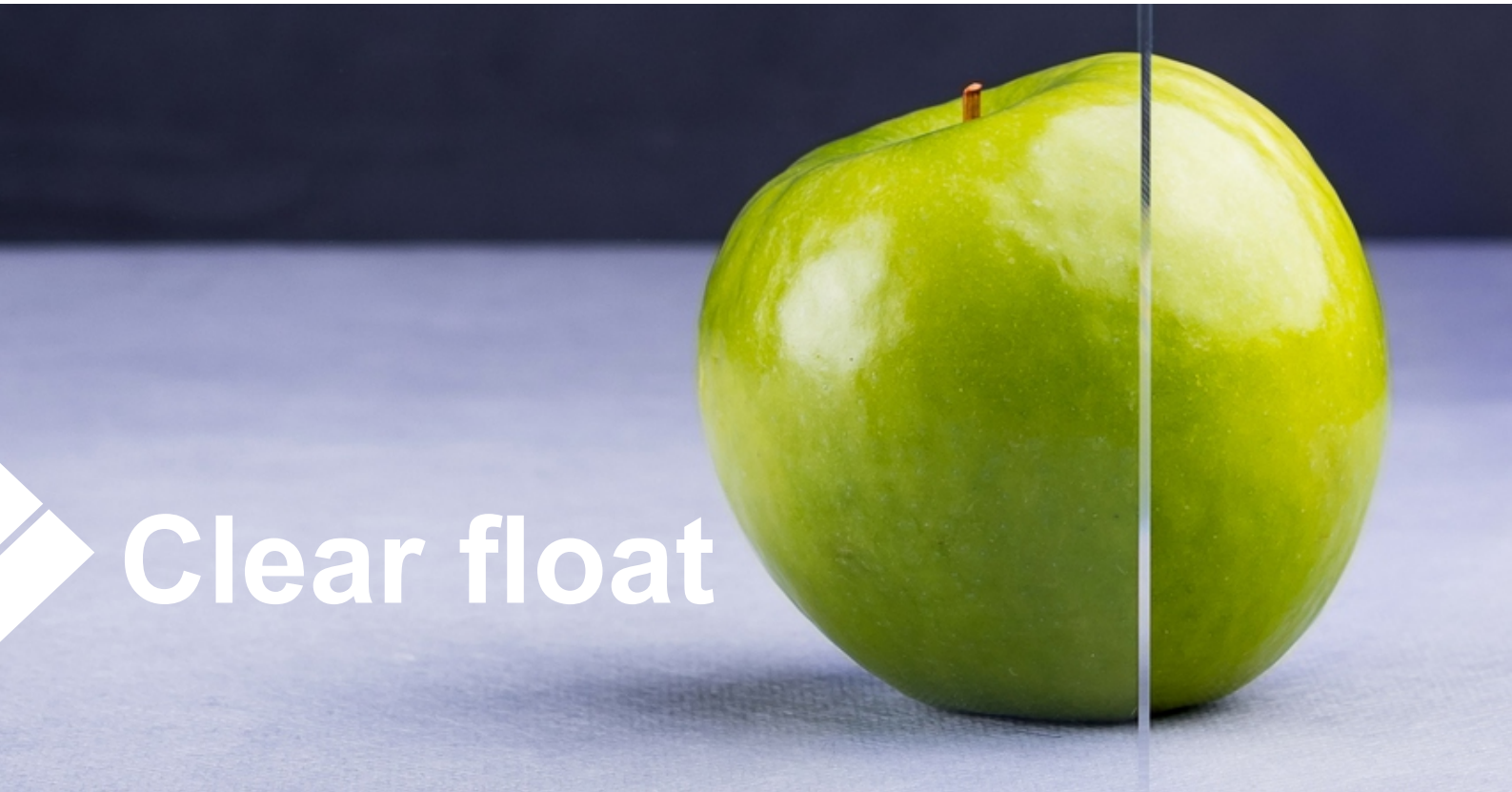
YOUR PARTNER IN GLASS

**Your Partner  
In Glass**

---

**Architectural glass**

---



# Clear float

The basic type of glass that is the product of mixing the so-called glass batch and the solidification of molten glass on the surface of molten tin.

Float glass is almost perfectly flat, it has no distortions or optical defects. It is the most commonly used raw material for further processing because of its huge range of applications.

Colorless float is a product for both end users and further processors in the glass processing industry.

**Manufacturers:** PILKINGTON Polska Sp. z o.o. (Optifloat), GUARDIAN Częstochowa Sp. z o.o (ExtraClear), Saint-Gobain Building Glass Polska (SGIM Planiclear), Import

**Available thicknesses:** 2 - 19 mm

## Available dimensions:

2 mm	3 mm	4 mm	5 mm	6 mm
1605x1000	2250x1605	2000x1605	2250x1605	2250x1605
1605x2000	2550x1605	2250x1605	2550x1605	2550x1605
1605x1300	3210x2250	2550x1605	3210x2250	3210x2250
		3210x2000	3210x2550	3210x2550
		3210x2250		
		3210x2550		
8 mm	10 mm	12 mm	15 mm	18 mm
2250x1605	2250x1605	2250x1605	3300x2250	3300x2250
2550x1605	2550x1605	2550x1605		
3210x2250	3210x2250	3210x2250		
3210x2550	3210x2550	3210x2550		



# Extra white float

**Extra white float is completely discolored glass, obtained by reducing the content of iron oxides in molten glass.**

Due to its properties and translucency, especially visible on the edges, it is used when the colored glow of float glass is not recommended.

This type of glass is used whenever perfect transparency and light transmission as well as color purity are especially important (also in the case of laminated glass).

**Manufacturers:** PILKINGTON Polska Sp. z o.o. (Optiwhite)

**Available thicknesses:** 3 - 19 mm

**Available dimensions:**

3 mm	4 mm	5 mm	6 mm	8 mm
2250x1605	2250x1605	2250x1605	2250x1605	2250x1605
3210x2250	2550x1605	2550x1605	2550x1605	2550x1605
	3210x2250	3210x2250	3210x2250	3210x2250
	3210x2550	3210x2550	3210x2550	3210x2550

10 mm	12 mm	15 mm	19 mm
2250x1605	2250x1605	3210x2250	3210x2250
2550x1605	2550x1605		
3210x2250	3210x2250		
3210x2550	3210x2550		





## Stained glass

**Stained glass is created by adding appropriate components that cause the coloration of molten glass during the process of production.**

The color intensity of stained glass depends on the thickness of the glass. Stained glass gains additional aesthetic value and sun protection properties due to its coloring.



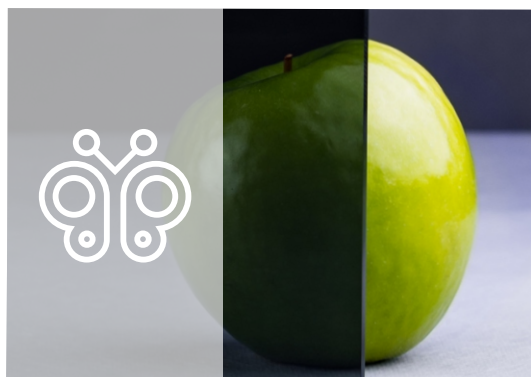
### **Parsol Ultra Grey Venus**

It is characterized by an extremely intense black color and very low light transmission of 10%. It is darker than the Dark Grey glass that is available on our website.

**Manufacturers:** Saint-Gobain Building Glass Polska

#### **Available dimensions:**

4 mm	6 mm
3210x2000	3210x2000



### **Dark Grey**

**Manufacturers:** AGC Glass Europe (Planibel Dark Grey)

#### **Available dimensions:**

4 mm	6 mm	8 mm	10 mm
2250x1605	2250x1605	2250x1605	3210x2250
3210x2250	3210x2250	3210x2250	

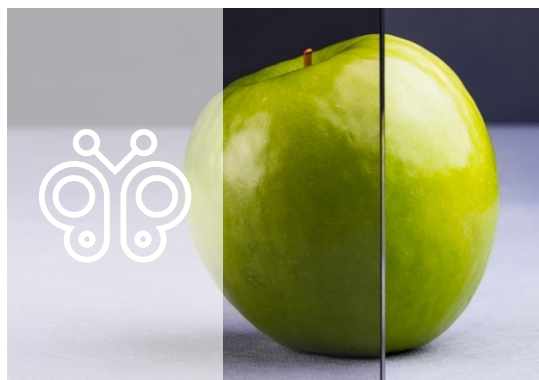


## Dark Blue

**Manufacturers:** AGC Glass Europe (Planibel Dark Blue)

### Available dimensions:

4 mm	6 mm
2250x1605	2250x1605
	3210x2250



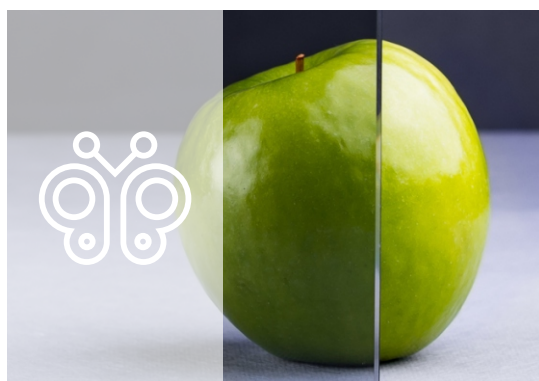
## Brown

**Manufacturers:** AGC Glass Europe (Planibel Bronze), Import

### Available dimensions:

3 mm	4 mm	5 mm	6 mm
2250x1605	2440x1650	3300x2140	3300x2140
3210x2250	3300x2140	2250x1605	2250x1605
	2250x1605	3210x2250	2550x1605
	2550x1605		3210x2250
	3210x2250		3210x2550
	3210x2550		

8 mm	10 mm
3300x2140	3210x2250
2250x1605	
3210x2250	
3210x2550	



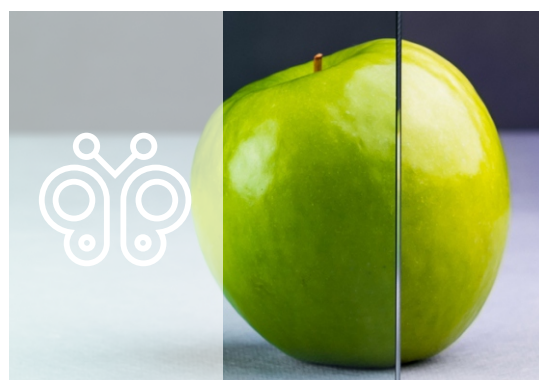
## Graphite

**Manufacturers:** AGC Glass Europe (Planibel Grey), Import

### Available dimensions:

3 mm	4 mm	5 mm	6 mm
2250x1605	3300x2140	3300x2140	3300x2140
3210x2250	2250x1605	2250x1605	2250x1605
	2550x1605	3210x2250	2550x1605
	3210x2250	3210x2550	3210x2250
	3210x2550		3210x2550

8 mm	10 mm	12 mm
3300x2140	3210x2250	3210x2250
2250x1605		
3210x2250		



## Green

**Manufacturers:** PILKINGTON Polska Sp. z o.o. (Optifloat Green), AGC Glass Europe (Planibel Green)

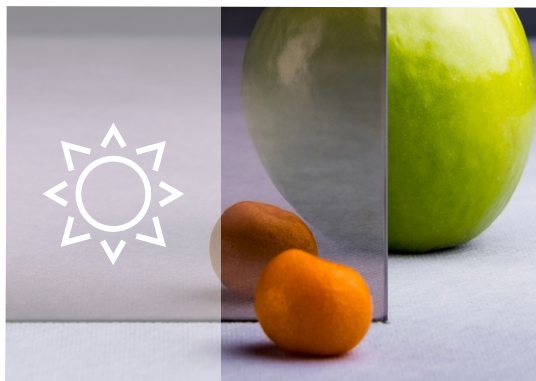
### Available dimensions:

4 mm	5 mm	6 mm	8 mm	10 mm
3210x2250	3210x2250	3210x2250	3210x2250	3210x2250
3210x2550	3210x2550	3210x2550		



**Reflective glass is stained glass with a special "reflective" coating. The coating is applied in the production process and it is designed to reflect solar radiation and to limit visible light.**

Its high light reflection coefficient limits room heating and lighting brightness. It also provides more privacy. The coating is embedded in the glass, which gives it exceptional durability and additional aesthetic value.

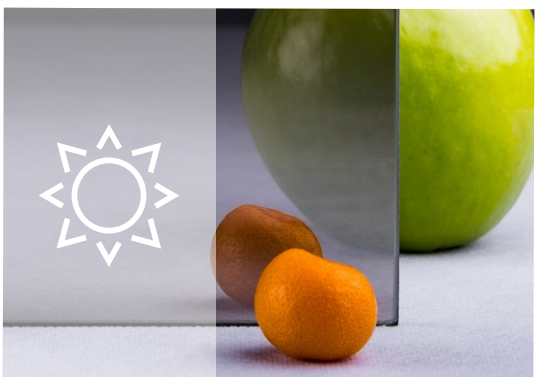


## Classic Bronze

**Manufacturers:** AGC Glass Europe (Stopsol Classic Bronze)

### Available dimensions:

4 mm	6 mm
2250x1605	3210x2250
2550x1605	3210x2550
3210x2140	
3210x2250	
3210x2550	



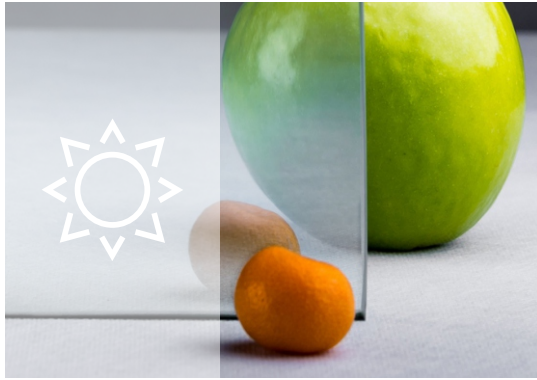
## Classic Grey

**Manufacturers:** AGC Glass Europe (Stopsol Classic Grey)

### Available dimensions:

4 mm	6 mm
2250x1605	3210x2250
2550x1605	3210x2550
3210x2250	
3210x2550	



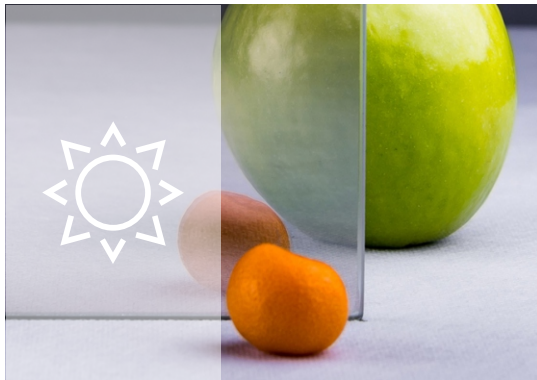


## Classic Green

**Manufacturers:** AGC Glass Europe (Stopsol Classic Green)

### Available dimensions:

4 mm	6 mm
3210x2250	3210x2250

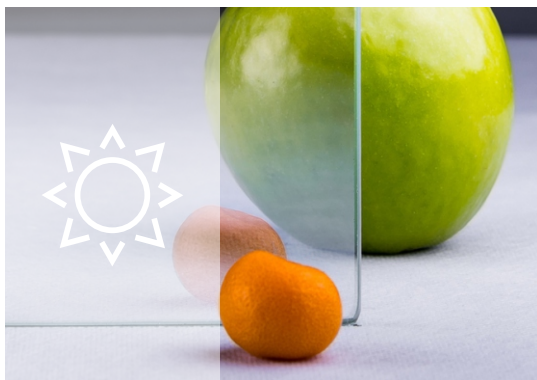


## Classic Clear

**Manufacturers:** AGC Glass Europe (Stopsol Classic Clear)

### Available dimensions:

4 mm	6 mm
3210x2250	3210x2250

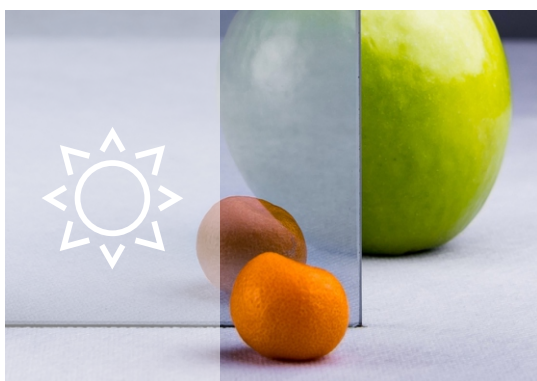


## Supersilver Clear

**Manufacturers:** AGC Glass Europe (Stopsol Supersilver Clear)

### Available dimensions:

4 mm	6 mm
2250x1605	2250x1605 3210x2250

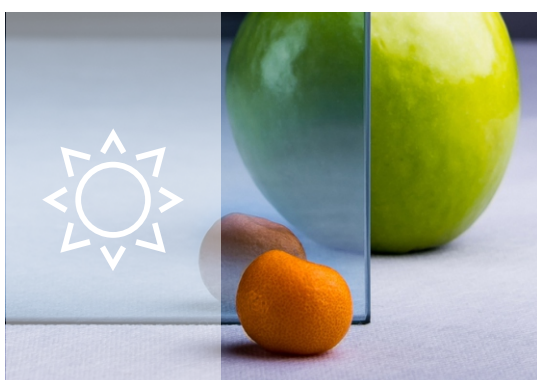


## Supersilver Grey

**Manufacturers:** AGC Glass Europe (Stopsol Supersilver Grey)

### Available dimensions:

4 mm	8 mm
3210x2250	3210x2550



## Supersilver Dark Blue

**Manufacturers:** AGC Glass Europe (Stopsol Supersilver Dark Blue)

### Available dimensions:

6 mm
3210x2250



# Low-e soft-coated glass

**Low-e soft-coated glass is glass with coatings that enable a smooth penetration of solar radiation into the building and at the same time limit thermal leakage from the building to the outside world.**

This reduces heating costs, increases thermal comfort and protects the environment.

This type of glass is used mainly in the construction industry, primarily for the production of double-glazed units.

**Manufacturers:** PILKINGTON Polska Sp. z o.o. (Optitherm), Saint-Gobain Building Glass Polska (Planitherm XN), Import

**Available thicknesses:** 4 mm

## Available dimensions:

4 mm	33.1	44.1	44.2
3210x2250 3210x2550	3210x2250 3210x2550	3210x2250 3210x2550	3210x2250 3210x2550





# Low-e hard-coated glass

**Low-e hard-coated glass is easy to process, has a long shelf life and is characterized by a high level of coating durability.**

Emissivity at the level of  $U_g = 1.5$  makes it possible for this type of glass to be utilized in the production of double-glazed units in residential and commercial construction sectors.

**Manufacturers:** AGC Glass Europe (Planibel G)

**Available thicknesses:** 4 - 6 mm

## Available dimensions:

**4 mm**

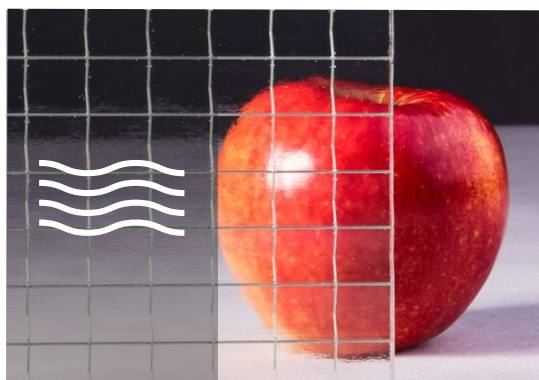
2250x1605  
3210x2250

**6 mm**

3210x2250



Wired glass is a type of glass with steel that is embedded in it at the production stage. The sunken metal mesh of square mesh is dense enough to hold large shards of glass in case it breaks. The steel prevents the pieces from falling out.



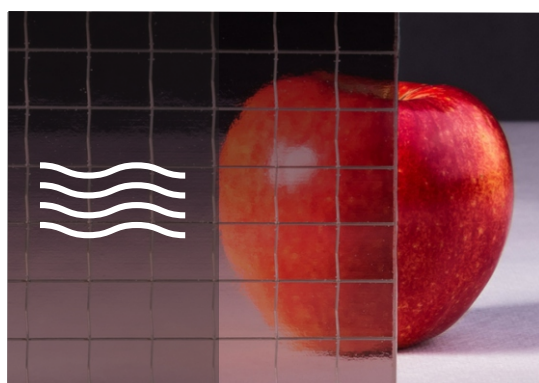
## Colorless

**Manufacturers:** Saint-Gobain Building Glass Polska

### Available dimensions:

6 mm

2040x1260  
2040x1860  
2520x2040  
3300x2040



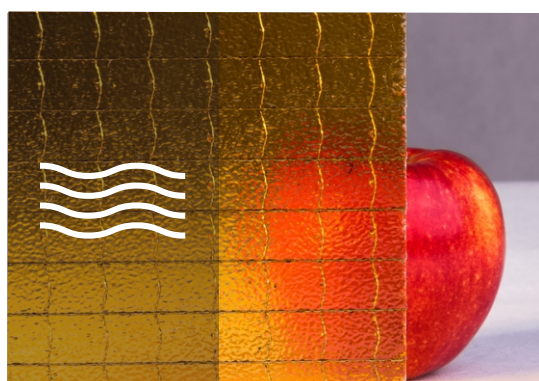
## Brown

**Manufacturers:** Saint-Gobain Building Glass Polska

### Available dimensions:

6 mm

2520x2040



## Orange

**Manufacturers:** Saint-Gobain Building Glass

### Available dimensions:

6 mm

2520x2040





**Laminated glass (VSG) belongs to the so-called safety glass. It consists of two or more panes joined together by means of one or more specialized PVB films.**

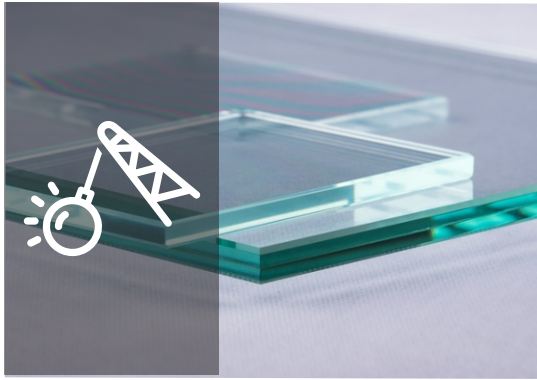
The elements are combined through lamination process under vacuum at high temperatures. Depending on the set and the number and thickness of individual glass panes and films, laminated glass with different parameters is produced. This type of glass makes it possible to meet various security needs at different levels. Laminated glass owes its properties to the unique production process in which the layers are glued together with durable laminate (PVB).

Laminated glass is widely used in the construction and architecture industries, including balustrades, roofing and partitions.

We offer a variety of types of this kind of glass in various sizes and with varying degrees of durability: from classic ones, protecting against injury, to more durable protective and anti-burglary variants.

We only sell laminated glass sheets that meet all the relevant guidelines for their production and standards in terms of their parameters. We are sure that the glass we offer will work great in many different industries and that it will remain intact during proper processing.





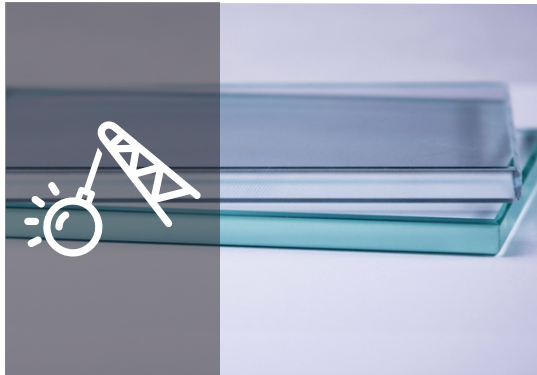
## Colorless

**Manufacturers:** PILKINGTON Polska Sp. z o.o., Saint-Gobain Building Glass Polska, Import

### Available dimensions:

22.1	33.1	33.2	44.1	44.2
2550x1605	2250x1605 2550x1605 3210x2000 3210x2250 3210x2550	3210x2250	2250x1605 2550x1605 3210x2000 3210x2250 3210x2550	2250x1605 2550x1605 3210x2000 3210x2250 3210x2550

44.4	55.1	55.2	66.1	66.2
2250x1605 2550x1605 3210x2250 3210x2550	3210x2250 3210x2550	3210x2250 3210x2550	3210x2250 3210x2550	3210x2250 3210x2550

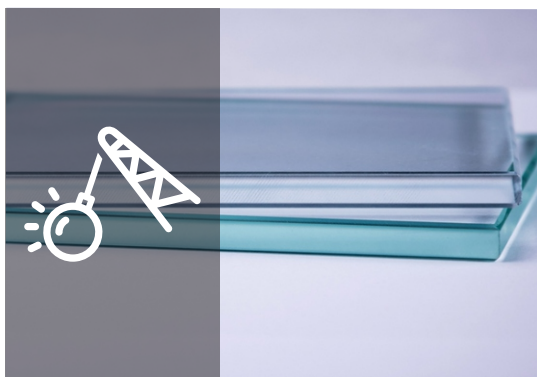


## Extra white

**Manufacturers:** PILKINGTON Polska Sp. z o.o. (Optiwhite)

### Available dimensions:

33.1	44.1
3210x2250	3210x2250



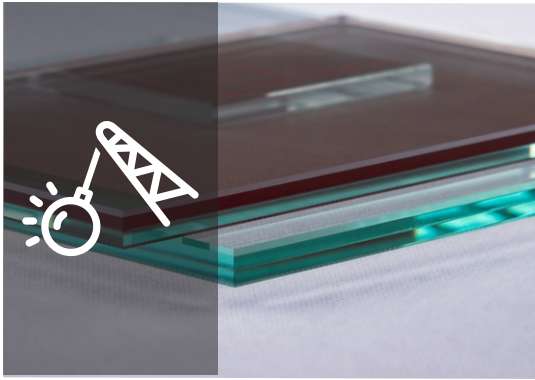
## Matte

**Manufacturers:** PILKINGTON Polska Sp. z o.o., Saint-Gobain Building Glass Polska

### Available dimensions:

22.1	33.1	44.2	44.2	55.1
2550x1605	2250x1605 2550x1605 3210x2000 3210x2250 3210x2550	2250x1605 2550x1605 3210x2000 3210x2250 3210x2550	2250x1605 2550x1605 3210x2250 3210x2550	3210x2250 3210x2550

55.2	66.1	66.2
3210x2250	3210x2250	3210x2250

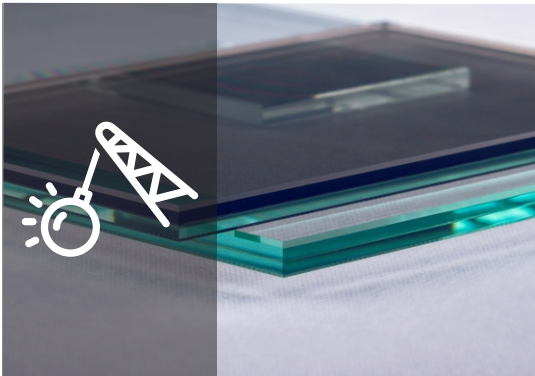


## Brown

**Manufacturers:** PILKINGTON Polska Sp. z o.o., Saint-Gobain Building Glass Polska

### Available dimensions:

33.1	44.1
2250x1605	2250x1605
3210x2250	3210x2250

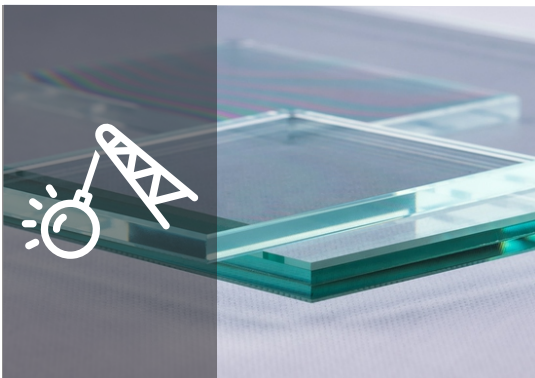


## Graphite

**Manufacturers:** PILKINGTON Polska Sp. z o.o. , Saint-Gobain Building Glass Polska

### Available dimensions:

33.1	44.1
2250x1605	2250x1605
3210x2250	3210x2250
	3210x2550



## Soundproof

**Manufacturers:** PILKINGTON Polska Sp. z o.o. (Optiphon)

### Available dimensions:

55.2	66.2
3210x2550	3210x2550



wutkowski®

YOUR PARTNER IN GLASS

## Wutkowski

Spółka z ograniczoną  
odpowiedzialnością

Ul. Szklanych Domów 1  
89-530 Śliwice



**tel:** +48 52 334 08 10



**mobile:** +48 692 989 499



**e-mail:** sekretariat@wutkowski.com.pl



**www.wutkowski.com**



wutkowski®

YOUR PARTNER IN GLASS